

Organiser:



Iceland
Liechtenstein
Norway



**Active
citizens** fund

VOICE & VOTE

WEBINAR:

in search for the advanced deliberative initiatives that present more complex civic participation methods

29 JUNE 2023

Partners:



**PARTICIPATION
FACTORY** +++



FUNDAÇÃO
CALOUSTE
GULBENKIAN

And:

- ACF Czech Republic,
- ACF Estonia,
- VouliWatch, Greece,
- ACF Lithuania,
- ACF Portugal.

AGENDA FOR TODAY



ABOUT THE INITIATIVE



**YVES DEJAEGERE, FIDE "DELIBERATIVE WAVE -
WHAT DOES IT MEAN AND IS IT REALLY A GOOD
ONE?"**



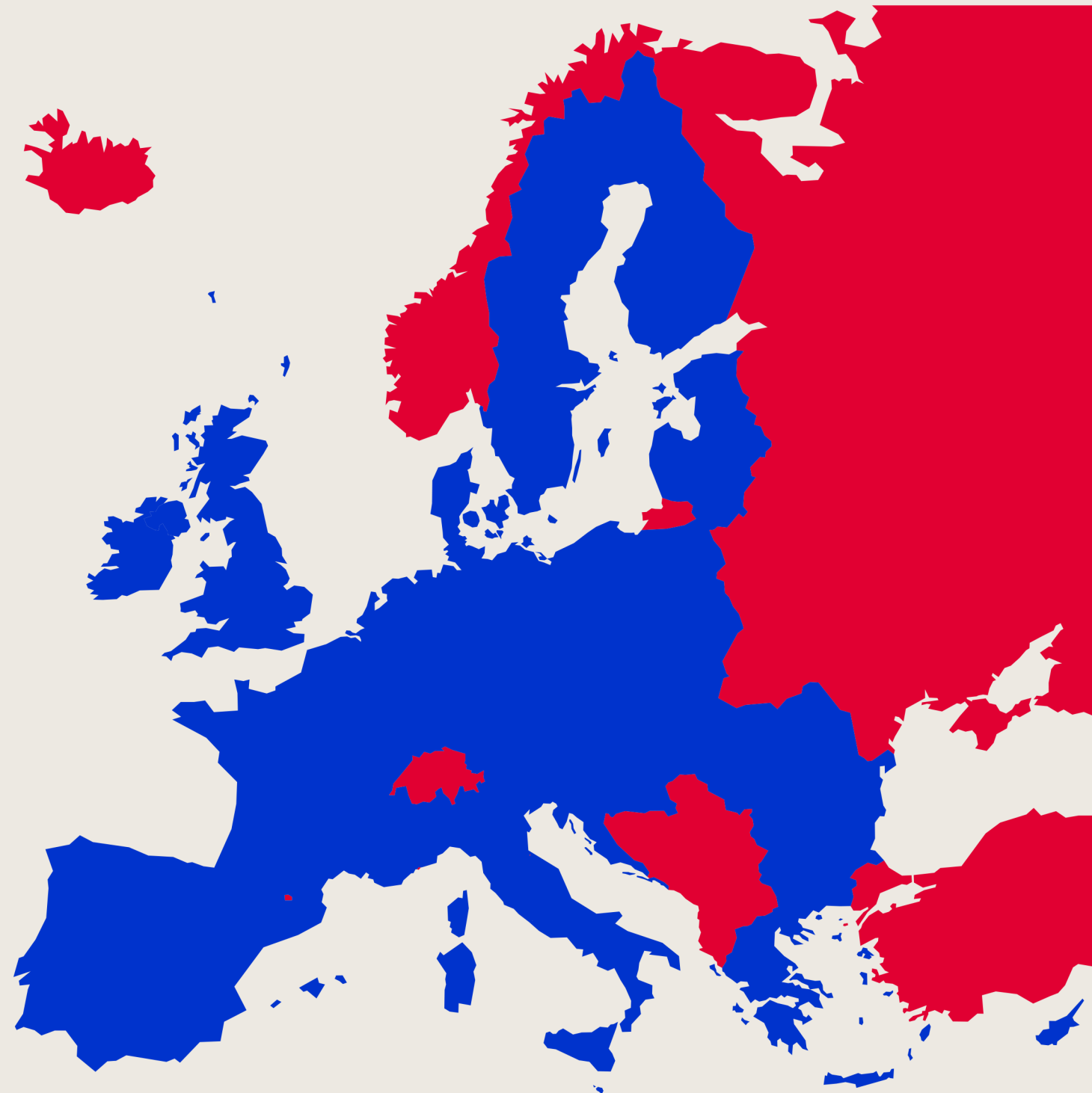
DIVING INTO PRACTICE - 5 CASE STUDIES



DISCUSSION



ABOUT THE INITIATIVE



Funding:



**Active
citizens fund**

Event is a part of a regional initiative carried out with the financial support of the Active Citizens Fund, programme funded by Iceland, Liechtenstein and Norway through the EEA Grants and Norway Grants 2014-2021.



ABOUT THE INITIATIVE

Organiser:



Partners:

- ACF Czech Republic,
- ACF Estonia,
- VouliWatch, Greece,
- ACF Lithuania,
- ACF Portugal
- ACF Poland-Regional Fund (Education for Democracy Foundation)
- Participation Factory

ABOUT THE INITIATIVE





DELIBERATIVE WAVE - WHAT DOES IT MEAN AND IS IT REALLY A GOOD ONE?

YVES DEJAEGBHERE, FEDERATION FOR INNOVATION IN DEMOCRACY - EUROPE

— FIDE

DEMOCRACY

Of the people,
by the people
for the people?

(and some human rights too...)

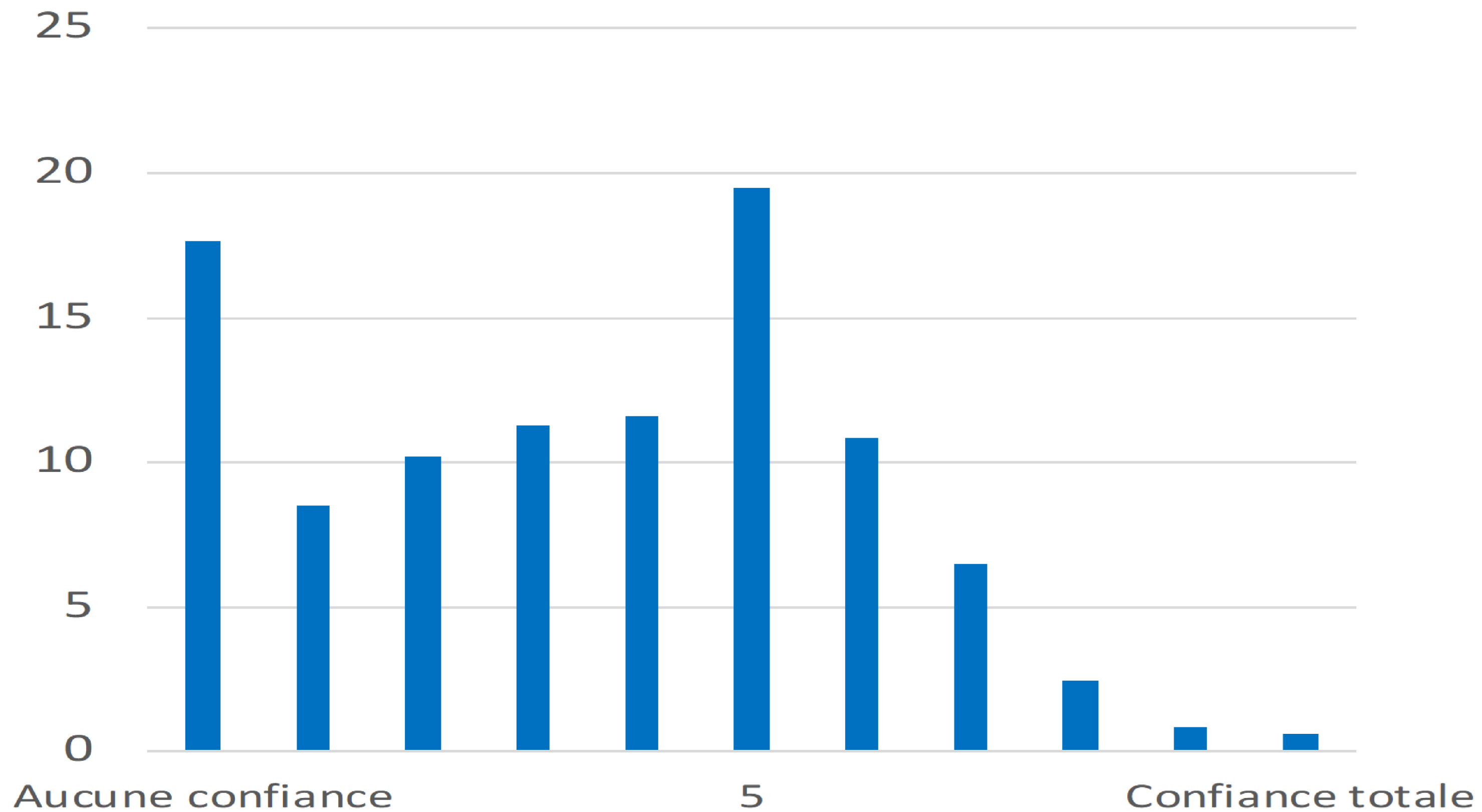




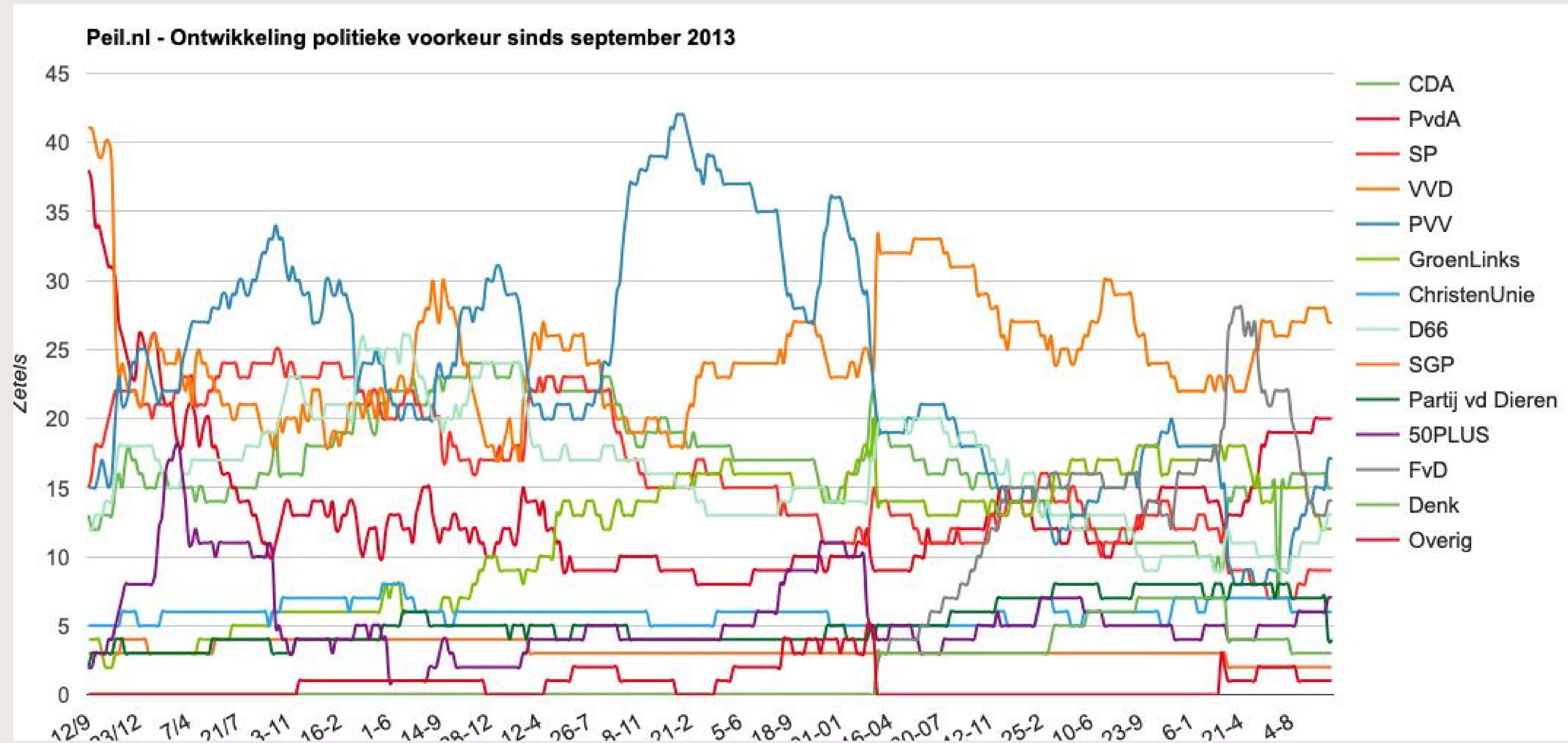
WHY DO WE NEED TO INNOVATE DEMOCRACY?

-FIDE

Confiance en politiciens - Belgique 2019 (en % de la population)



A CLEAR MESSAGE?

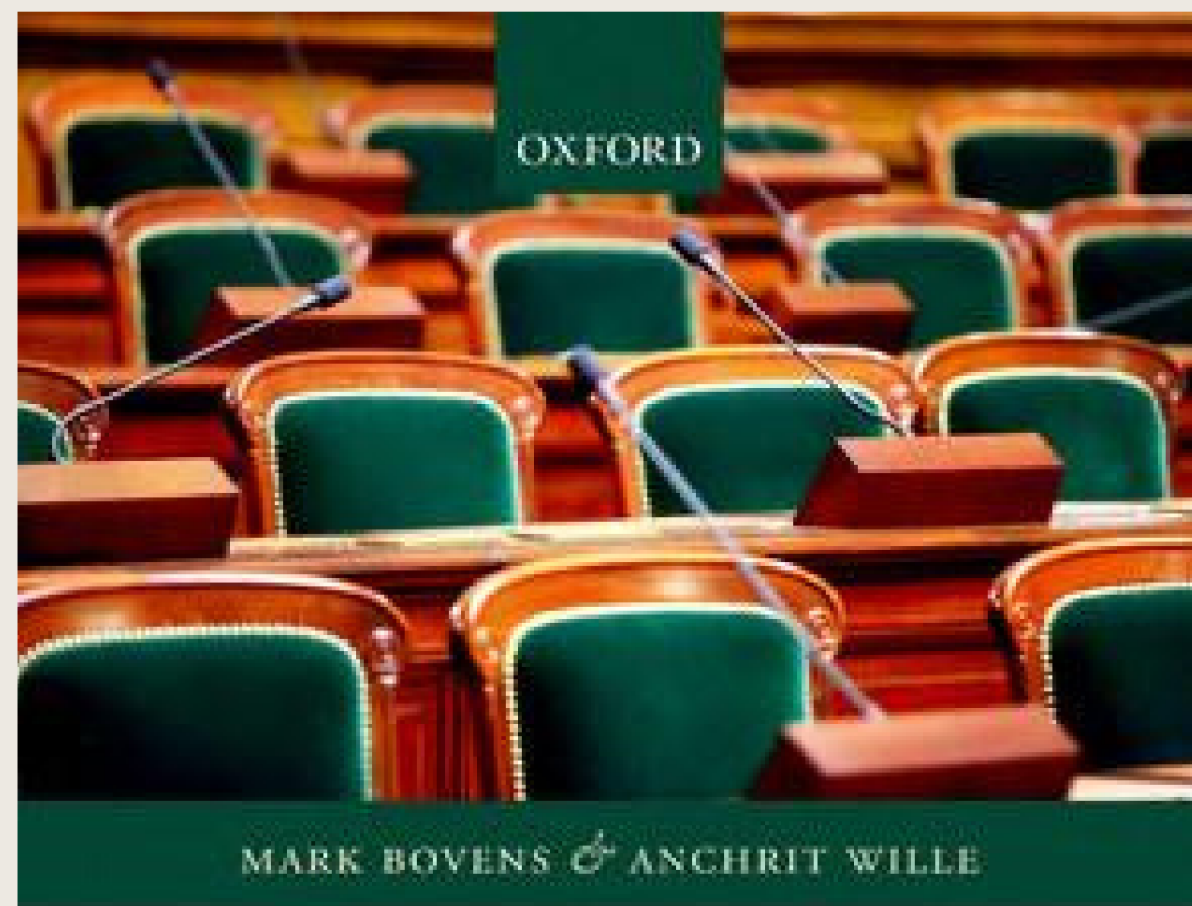




**BUT THERE IS NON-ELECTORAL
PARTICIPATION...**

-FIDE





DIPLOMA DEMOCRACY

The Rise of Political Meritocracy



THE NEW YORK TIMES BESTSELLER

THINKING, FAST AND SLOW



DANIEL
KAHNEMAN

WINNER OF THE NOBEL PRIZE IN ECONOMICS

"[A] masterpiece . . . This is one of the greatest and most engaging collections of insights into the human mind I have read." —WILLIAM EASTERLY, *Financial Times*



Often the question is what impact there is from participation?

- ==> Setting up participation that has no real impact is a road to frustration and lack of trust

DELIBERATIVE DEMOCRACY AS A COMPLEMENTARY TOOL?

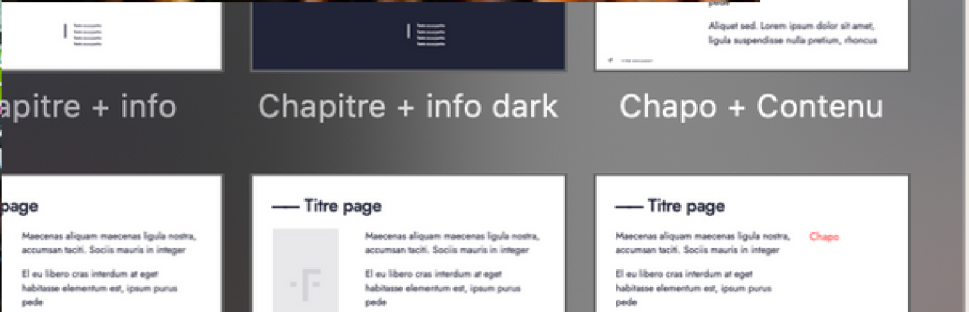


WHAT IS IT?

- RANDOM REPRESENTATIVE SAMPLE OF CITIZENS
- GIVEN A CLEAR TASK AND MANDATE
- GIVEN ENOUGH TIME
- BALANCED INFORMATION
- DELIBERATE
- RECOMMENDATIONS FOR POLICY

**OF COURSE YOU CAN'T JUST IMPROVISE.
SOME STANDARDS ARE NEEDED.
(OECD GOOD PRACTICE PRINCIPLES – 2020)**





-FIDE

WE MAKE A "PARTICIPATION TRADE-OFF" IN PARTICIPATION PRINCIPLES

1. "Open": everyone can participate
2. "Fair": everyone should have an equal chance
3. "Transparent": it should be visible to everyone how participants were selected and who was there.
4. "Rule-based": things are done by following clear rules
5. "Representative": the group should represent the wider population.
6. "Impactfull": participation should have some impact on policy

THERE ARE OTHER BENEFITS

- Make governance more inclusive by opening the door to a much more diverse group of people.
- Strengthen integrity and prevent corruption by ensuring that groups and individuals with money and power cannot have undue influence on a public decision.
- Help counteract polarisation and disinformation.
- focus on long-term solutions beyond electoral cycles (e.g. MacKenzie & Caluwaerts, 2021, “Paying for the future: deliberation and support for climate action policies”)

HOW TO CREATE THE BEST CONDITIONS FOR THIS TO SUCCEED (NOT LIMITATIVE...)?

- Ambition! (you can take a slow start, but shift gears...)
- Follow-up needs to be serious and planned
- Think about your question (remit)
- Think about how this will “land” in your administration. Take them on board asap
- Budget the needed resources (not only money...)

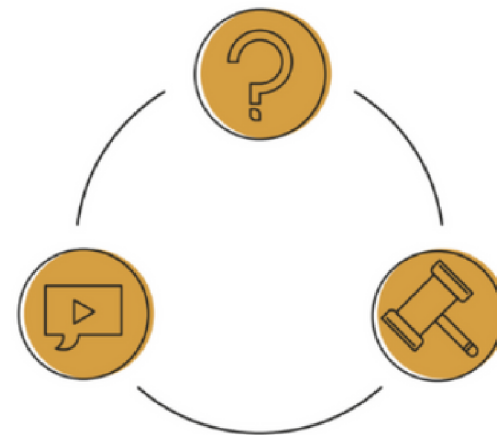
USE EXPERTISE (OR CONSULT INFORMATION AS MUCH AS YOU CAN)



ORGANISING A DEMOCRATIC LOTTERY

FIDE - POLICY RESEARCH

HOW TO LINK RECOMMENDATIONS OF CITIZENS ASSEMBLIES TO POLICY MAKING ?



Key drivers of impact
How to unleash the potential of climate assemblies



INCLUDING THE UNDER-REPRESENTED

FIDE - POLICY RESEARCH

QUESTIONS?



YVES.DEJAEGBHERE@FIDE.EU